

Service
Service
Service



Philips Domestic Appliances and Personal Care

Service Manual

PRODUCT INFORMATION

Features :

- Contour Tracking System; comb adapts to the contours of the face.
- Unique setting for stubble look (1.5 mm).
- Integrated adjustment system for 4 different length settings. (Maximum length setting: 0.7 cm).
- Maintenance free cutting element: no oiling required.
- Three dimensional rounded teeth at skin side for max. comfort
- Charging indication.

TECHNICAL DATA

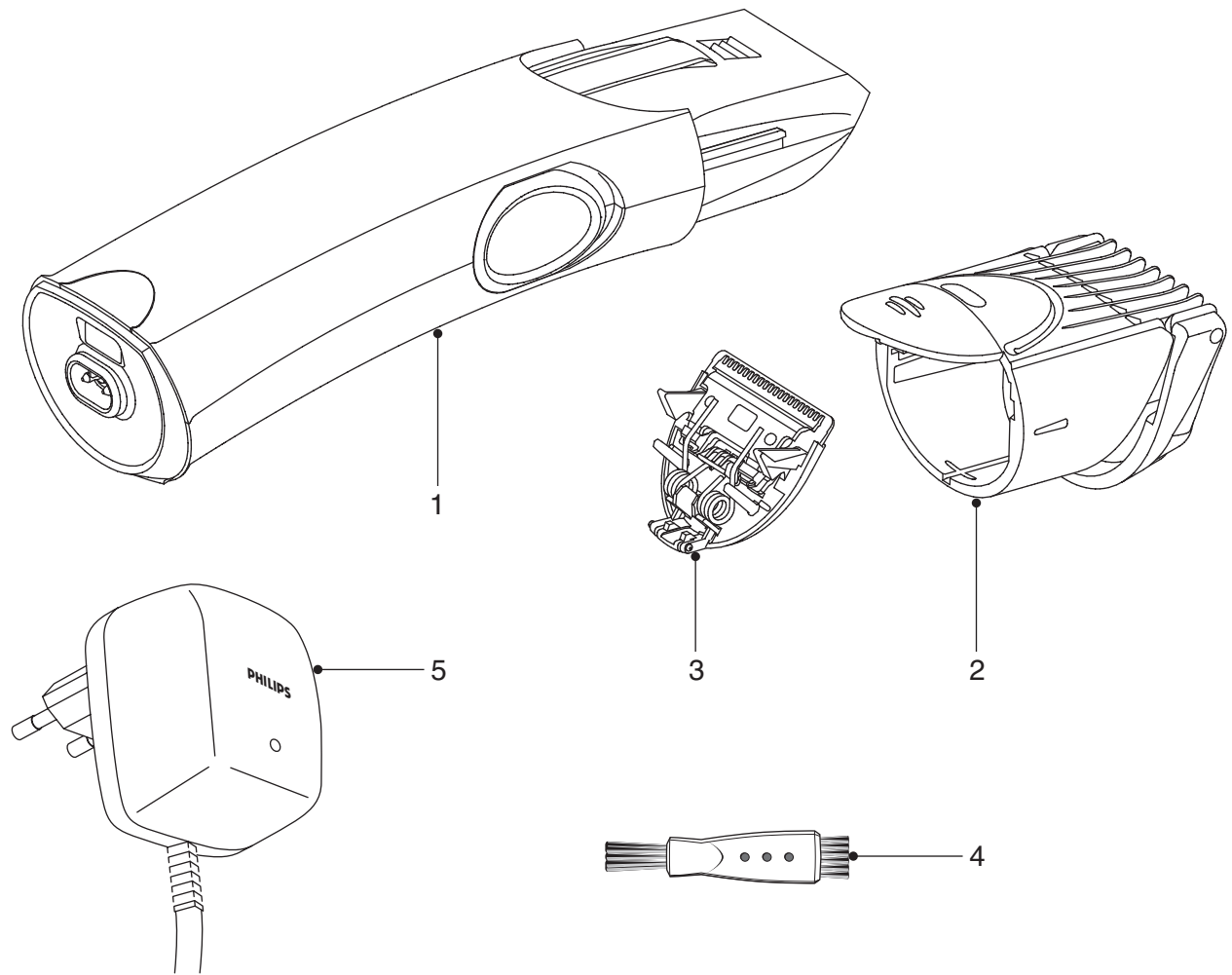
Powersystem	: Rechargeable
Batteries	: 1 x AA NiMh or 1 x AA NiCd
Charging period	: NiCd batteries : 10 hours
Capacity	: NiCd batteries : 40 minutes

NOTES :

- * In order to guarantee the longest possible working life of the battery :
 - do not charge for more than 24 hours
 - do not keep the charging unit permanently plugged in
 - discharge the battery completely once a year by letting the motor run until it stops
- * If the battery is empty and the consumer wants to trim his beard, the trimmer has to be charged for at least 1.5 hours to have enough power for one trim
- * The appliance should be charged again, when not used for a long period

Product meets the requirements regarding interference suppression on radio and TV.

EXPLODED VIEW + PARTS LIST HQ-T 562



pos	description	service code
1	Assy HQ-T 562	4203 035 77370
2	Comb	4203 035 76370
3	Cutter	4822 690 10174
4	Cleaning brush	4822 479 30183
5	Adapter NiCd EURO	4203 035 76520
	Adapter NiCd UK	4203 035 76550
	Adapter NiCd CND	4203 035 76530

After the product has been repaired, it should function properly and has to meet the safety requirements as laid down and officially established at this moment.